

Building Light Control

Wireless 4ch LCM

Product Sheet



Wirelessly control any make or type of luminaire

The Mymesh 4ch LCM has a Mymesh Mini-BLC node built-in which is driving 4 x 6 pole ports. This allows easy plug and play connectivity of up to 4 luminaires or 3 luminaires and 1 x emergency luminaire.

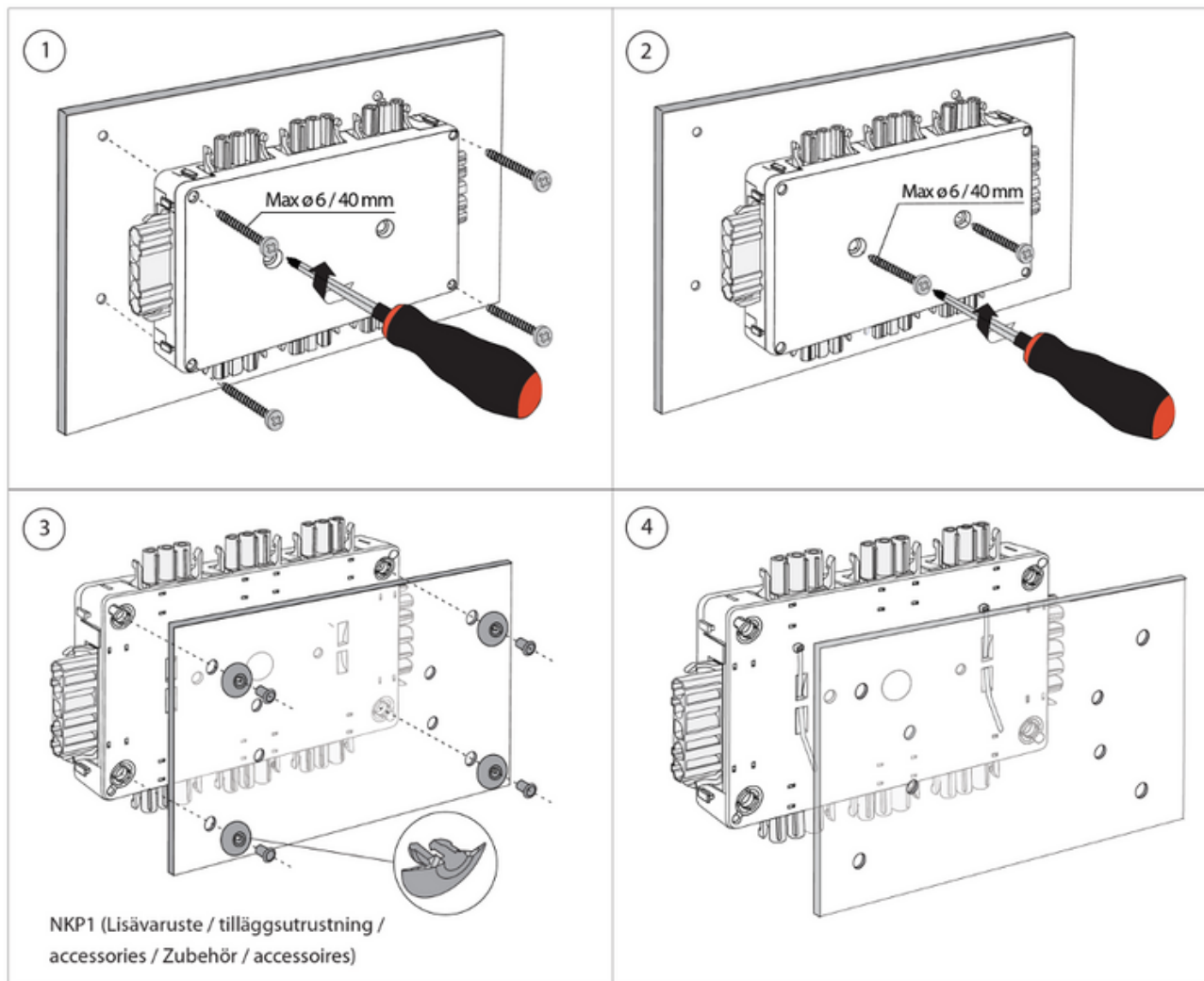
Key Features

- Integrated prewired Mymesh node within the LCM
- Connects up to 4 Luminaires, one of which can be an emergency for remote reporting when combined with a collator on site
- Simple plug and play main power input
- Simple plug and play Ensto Luminaire leads into the LCM
- Integrates seamlessly with other Mymesh nodes and devices (PIR's etc) for a fully networkable solution

LCM Specification

Colour	White
Degree of protection	IP20
Standards	IEC 61535
Operating temperature min	-30°C without mechanical stress
Operating temperature max	70 °C
Installation temperature min	5 °C
Length x Width x Height	31 mm x 220mm x 139mm
Plug and Socket Specification	
Rated voltage	250V single phase
Rated current for total box	16A
Rated current to luminaire	16A
Number of poles	6
Number of inputs	1
Number of outputs	4
Locking mechanism	Integrated in plug-in connector

Mounting Installation Options



Part Codes

MM.EDB.001	Wireless Mymesh 4ch LCM
NAC32SH.W	3-pole socket with strain-relief is used as the cable set socket for 3-pole L,N & E circuits- For use in making up power lead from distribution board to LCM
NGCST6133	The 6-pole Plug with strain-relief is used as the cable set socket for 6-pole circuits for making luminaire leads
LS.5PSL2M1.57	2m 5core 1.0mm ² LSOH Starter c/w NAC 51S.W Luminaire lead
LS.5PSL3M1.57	3m 5core 1.0mm ² LSOH Starter c/w NAC 51S.W Luminaire Lead
LS.5PSL5M1.57	5m 5core 1.0mm ² LSOH Starter c/w NAC 51S.W Luminaire Lead
LS.5PSL5M1.57	5m 5core 1.0mm ² LSOH Starter c/w NAC 51S.W Luminaire Lead
LS.5PSL7M1.57	7m 5core 1.0mm ² LSOH Starter c/w NAC 51S.W Luminaire Lead
LS.6PSL2M1.57	2m 6core 1.0mm ² LSOH Starter c/w NGCST6133 Luminaire Lead
LS.6PSL3M1.57	3m 6core 1.0mm ² LSOH Starter c/w NGCST6133 Luminaire Lead
LS.6PSL5M1.57	5m 6core 1.0mm ² LSOH Starter c/w NGCST6133 Luminaire Lead
LS.6PSL7M1.57	7m 6core 1.0mm ² LSOH Starter c/w NGCST6133 Luminaire Lead