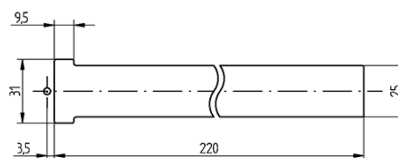
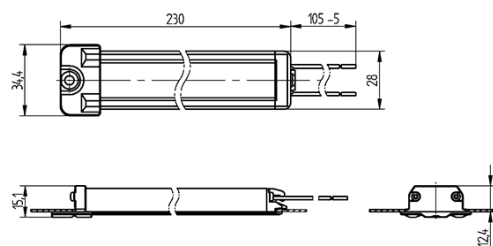
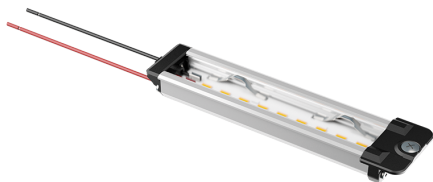




Technology for Light

## LED oven door lamp 77.116.1004.36



0,5 - 1,0



Technology for Light

## LED oven door lamp 77.116.1004.36

---

### DESCRIPTION

Easy installation by swivel-screw fixing

Symmetric light distribution for optimised illumination of the oven muffle

Frosted glass cover

Aluminium heat sink

Dimmable: No

Variable LED parameters (light colour, CR, type, power) possible on request

Possibility to upgrade to a higher energy efficiency

Protection class III by operating with SELV voltage

Warranty\*: 5 years

The choice of our products, as well as the technical correct installation in accordance with the relevant regulations (for example IEC 60598 / VDE 0711, IEC 60335 / VDE 0700) is the sole responsibility of the user.

Product name:	LED oven door lamp
Beam angle:	120°
Color temperature:	3000 K
CRI:	>80
Flux at Tc 85° C:	300 lm
Operational voltage:	12V
Power consumption (W) at Tc 85° C:	3.8 W
Module efficiency at Tc 85° C:	76 lm/W
Number of LEDs per module:	9
Operating mode:	Constant voltage
Operational current:	320 mA
Wires:	FEP, 0.35 mm²
lead length:	105 mm
Life span:	50.000 h
Note Warranty conditions:	*Warranty conditions of BJB GmbH & Co. KG as stated as available via the Internet under <a href="http://www.bjb.com/en/guarantee-conditions">www.bjb.com/en/guarantee-conditions</a> are valid.
Tolerances of optical and electrical data:	Tolerances of optical and electrical data: +/- 10%
Pkg.:	72