



# SX81



## TYPICAL APPLICATIONS

Refrigerators, electromedical appliances  
coffee machines, gardening equipments

## FUNCTIONS

- SPST, momentary or not
- SPST illuminated
- SPDT
- SPCO

## CYCLE No.

50.000

## CUT OUT

30x11 mm

## AMBIENT TEMPERATURE

125 °C

## GWT

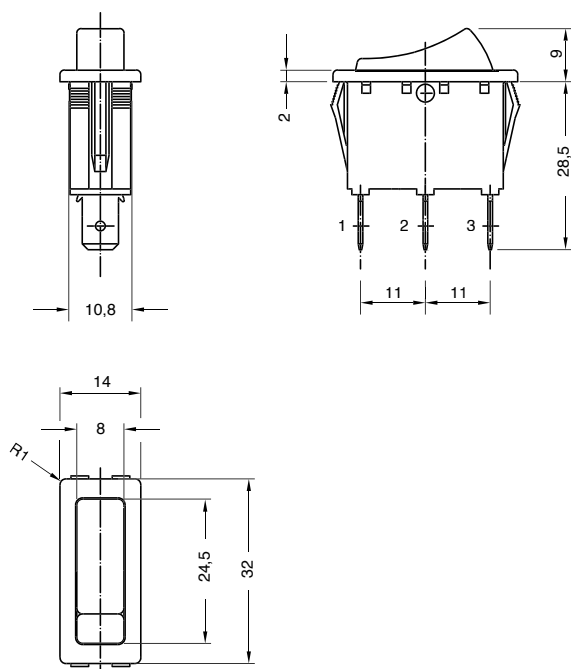
850 °C

## GWT NO FLAME (<2sec)

750 °C on demand

S X 8 1 ?

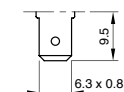
## DRAWING



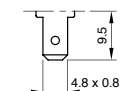
?

## TERMINAL

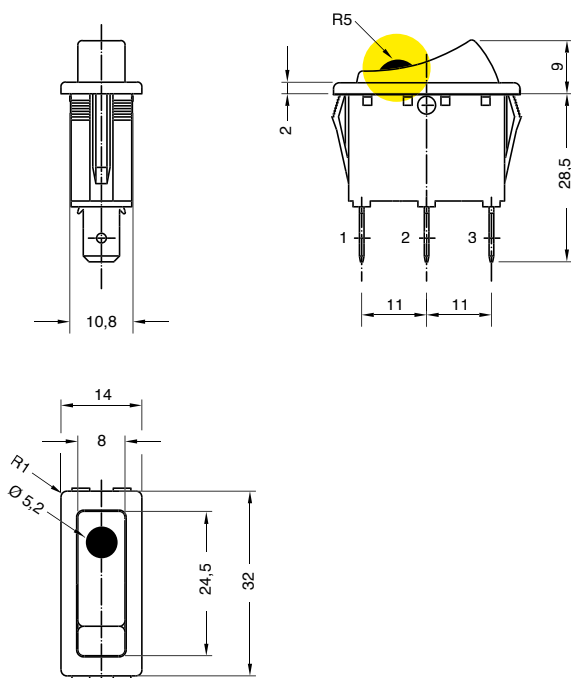
1



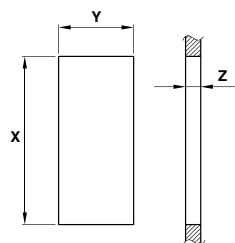
2



3



WATERPROOF CAP



	Z	Y	X
PLASTIC	0,7 ... 3,5	11,0 ±0,1	30,0 +0,2 0
METAL	0,7 ... 2,5	11,0 ±0,1	30,2 +0,2 0

DRAWING	TERMINAL	FUNCTION	RATING	BODY COLOUR	ROCKER COLOUR	MARKING COLOUR	MARKING	LENS COLOUR			
S	X	8	1						0	0	0

?	?	?	?	?	?	?	?	?	0	0	0
FUNCTION	RATING	BODY COLOUR	ROCKER COLOUR	MARKING COLOUR	MARKING	LENS COLOUR					

1



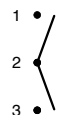
3



4



5



6



8

**Function 1**

20 (2) A / 250 VAC \*  
16 (8) A / 250 VAC  
10 (4) A / 400 VAC  
10 (6) A / 250 VAC - 5E4  
T125/55 °C  
EN 61058

20 A / 125 VAC  
16 A / 250 VAC  
3/4 HP - 125 / 250 VAC  
T105 °C  
UL 1054

**Function 3 - 4 - B**

16 (6) A / 250 VAC  
10 (4) A / 400 VAC  
10 (4) A / 250 VAC - 5E4  
T125/55 °C  
EN 61058

20 A / 125 VAC  
16 A / 250 VAC  
3/4 HP - 125 / 250 VAC  
T105 °C  
UL 1054

**Function 5**

16 (6) A / 250 VAC  
10 (4) A / 250 VAC - 5E4  
T125/55 °C  
EN 61058

16 A - 125 / 250 VAC  
3/4 HP - 125 / 250 VAC  
T105 °C  
UL 1054

**Function 6**

20 (2) A / 250 VAC \*  
16 (8) A / 250 VAC  
10 (6) A / 250 VAC - 5E4  
T125/55 °C  
EN 61058

20 A / 125 VAC  
16 A / 250 VAC  
3/4 HP - 125 / 250 VAC  
T105 °C  
UL 1054

\* Not available with terminal 2

1

black

2

white

X

custom

?

1

black

2

white

9

red

**ILLUMINATED**

G

red

H

orange

E

green

X

custom

?

0

none

1

black

2

white

X

custom

?

0

1

2

6

A

C

N

X

0

0

none

**ILLUMINATED**

G

red

H

orange

E

green

X

custom

?