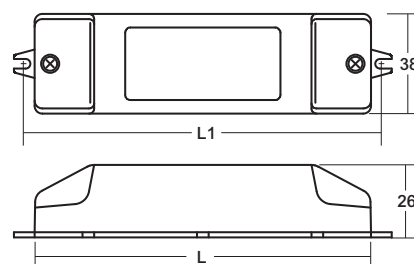
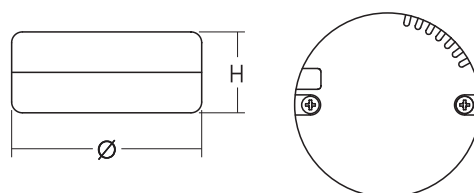


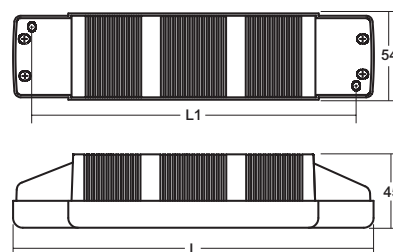
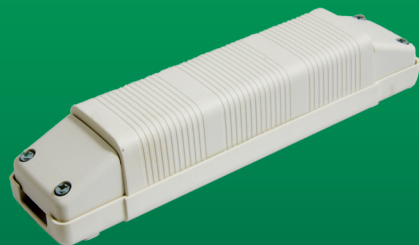
## PUMA



## ROUND



## PTE



- PUMA has a looping facility
- ROUND has a Tc of 90°C
- PTE is a potted transformer with a looping facility
- IP20 independent transformer
- Class II protection against electric shock following direct or indirect contact
- Complete with terminal cover and cable retainer
- Clamping screws on primary and secondary circuits for 3 - 6 mm<sup>2</sup> Ø cables (round), 3 - 8 mm<sup>2</sup> Puma/PTEF
- Cable strip back max. 18 mm
- Protected against overheating, short circuits, mains voltage spikes and overloads
- Trailing or leading edge dimming

Part number	Name	Rating	Range	Termination	Inputs	Outputs	Colours	W	H	L	Ø	Fixing L <sub>1</sub>
T.PUMA60	Puma 60	60Va	20-60	Leads or screw	2	2	Black or white	38	26	132		140
T.PUMA105	Puma 105	105Va	20-105	Leads or screw	2	2	Black or white	38	26	132		140
T.ROUND50	Round 50	70Va	10-50	Leads	1	1	White		19		47	
T.ROUND70	Round 70	70Va	20-70	Leads	1	1	White		22		53	
T.ROUND105	Round 105	70Va	20-105	Leads	1	1	White		22		70	
T.PTE200	PTE 200	200Va	100-200	Screw	2	3	Black or white	54	45	222		187
T.PTE250	PTE 250	250Va	100-250	Screw	2	3	Black or white	54	45	222		187