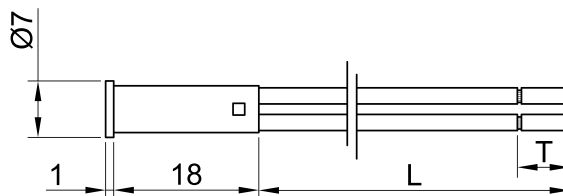
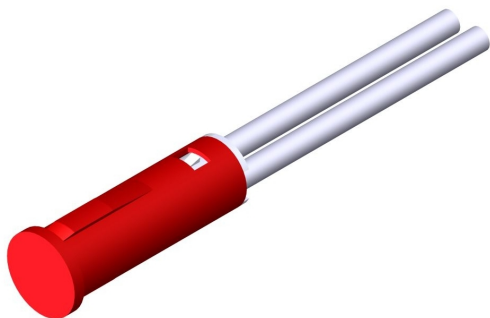




SLIM S.r.l.

Via dei Tigli, 14/16 (Z.I.)
20853 - Biassono (Monza Brianza) - Italy
commerciale@slim.it
www.slim.it

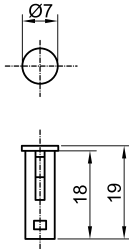
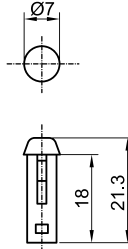
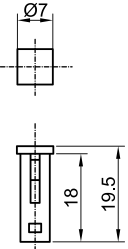
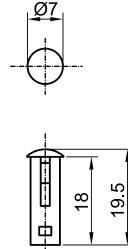
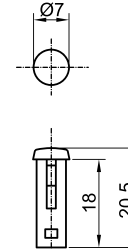
CODE: **TB/06/SQ**



Light indicator with front panel's connection

Lamps	incandescent • neon/fluoro • LED
Working voltage	2V • 6V • 12V • 24V • 48V • 110V • 250V • 450V
Working temperature	90°C Max • 120°C Max • 150°C Max
Hole diameter	6mm
Recommended thickness panel	from 0,5mm to 2mm
Method of connection to the panel	Self-locking
Type of connection	PVC Cable • silicone cable • silicone-glass cable
Wire ends	on request
Type of lenses	SQ3 • SQ4 • SQ5 • SQ6 • SQ7

Lenses available

<div>SQ3</div> <div></div>	<div>SQ4</div> <div></div>	<div>SQ5</div> <div></div>	<div>SQ6</div> <div></div>	<div>SQ7</div> <div></div>
---	---	---	--	---